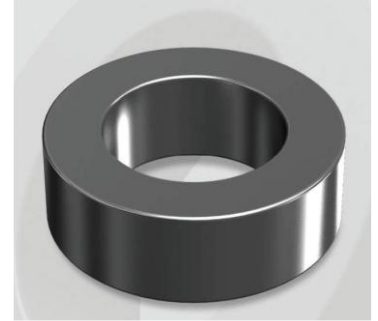


# CH252060GTS

## Electrical Characteristics

Material	Permeability ( $\mu$ )	AL $\pm$ 8% (nH/N <sup>2</sup> )	DCB (% min) @ 100 Oe	Coreloss (mW/cm <sup>2</sup> , max) @50kHz, 1000G
High Flux GTS	60	62	80.08	130

OD : 252G



## Core Dimensions

Dimensions		Uncoated (Before)		Coated (After)		Color	Packaging
		(mm)	(inch)	(mm)	(inch)		
OD	(Max)	25.20	0.992	26.00	1.024	Black	Box Qty = 360pcs
ID	(min)	14.60	0.575	13.90	0.547		
HT	(max)	10.00	0.394	10.80	0.425		

## Physical Characteristics

Cross Section (A)	Path Length ( $l$ )	Window Area (Wa)	Volume (V)	Breakdown Voltage (Vac)
0.504 cm <sup>2</sup>	6.10 cm	1.52 cm <sup>2</sup>	3.0744 cm <sup>3</sup>	1,000
0.07812 in <sup>2</sup>	2.402 in	299,980 cmil	0.1876 in <sup>3</sup>	

## Winding Information

0% Winding length/turn (cm)		
3.370		
40% winding factor Surface Area (cm <sup>2</sup> )		
30.39		
40% Wound Di.(mm)		
OD	ID	HT
29.45	9.11	14.92

## Typical DC Bias Performance

